



2015 British Finn National Championship
 including the
Jean-Jacques Godet Trophy
 and
2015 UK Blaze Class National Championship
 10 – 12 July 2015

Hayling Island Sailing Club, Hampshire, UK

SAILING INSTRUCTIONS

1 RULES

- 1.1 The regatta will be governed by the rules as defined in *The Racing Rules of Sailing*.
- 1.2 The Royal Yachting Association National prescriptions will apply, and can be viewed at: <http://www.rya.org.uk/SiteCollectionDocuments/Racing/RacingInformation/RacingRules/RYA%20Prescriptions%202013.pdf>
- 1.3 If there is a conflict between languages the English text will take precedence.
- 1.4 For the Finn class only Appendix P, Special Procedures for Rule 42, will apply.

2 COMMUNICATIONS WITH COMPETITORS

- 2.1 Notices to competitors will be posted on the official notice board, located in the race office, near the clubhouse entrance.
- 2.2 Signals made ashore will be displayed from the flag masts on the club race control box.
- 2.3 Flag D displayed ashore with a sound means: 'The warning signal will be made not less than 60 minutes after flag D is displayed'. Boats shall not go afloat until this signal is made.

3 CHANGES TO SAILING INSTRUCTIONS

Any change to the schedule of races will be posted by 20:00 on the day before it will take effect and any change to the sailing instructions will be posted at least 30 minutes before flag D is displayed (instruction 2.3) on the day it will take effect.

4 SCHEDULE OF RACES

- 4.1 The race schedule is as follows:

Date:	Time of 1st warning signal & scheduled races per day:	
	Time:	# Races:
Fri 10 July	14:55	2
Sat 11 July	11:55	3
Sun 12 July	11:55	2

- 4.2 The warning signal for each succeeding race of a day will be made as soon as practicable.
- 4.3 To alert boats that a race will begin soon, the orange starting line flag will be displayed with one sound at least five minutes before a warning signal is made.
- 4.4 One extra race per day may be sailed, provided that the event becomes no more than one race ahead of schedule, and that the change is made in accordance with instruction 3.

4.5 On the last day of the regatta no warning signal will be made after 15:30.

5 CLASS FLAGS

The class flags will be Class insignia.

6 RACING AREAS

6.1 Attachment A shows the location of racing areas 'Alpha', 'Bravo' and 'Charlie'. Racing may also take place in Chichester Harbour.

6.2 The area to be used will be posted each day on the official notice board.

6.3 **Danger Area:** The entrance to Chichester Harbour is low lying and indistinct and is flanked on either side by West Pole and East Pole Sands that extend for more than a mile offshore. The West Pole and East Pole Sands merge to form Chichester Bar a little over half a mile offshore. Ebb tides in the entrance to the harbour can run at up to six knots on springs and, with a falling tide and strong winds from a southerly sector, a dangerous sea may be encountered. At certain states of the tide, it is difficult for patrol boats to operate in the area of West Pole Sands. Boats are therefore advised to follow the marked navigation channel.

7 THE COURSES

7.1 The diagrams in Attachment B show the courses, the course designations, the approximate angles between legs, the order in which marks are to be passed, and the side on which each mark is to be left.

7.2 The gates 3S/3P and 4S/4P may be replaced by single marks to be left to port.

7.3 No later than the warning signal, the race committee signal boat will display the course designation and the approximate compass bearing of the first leg.

8 MARKS

8.1 Marks 1, 1a, 2, 3S, 3P, 4S and 4P will be yellow inflated cylinders.

8.2 New marks, as provided in instruction 10, will be of the same shape and colour as the original marks.

8.3 Starting marks will be a race committee signal boat at the starboard end and a boat or buoy at the port end.

8.4 Finishing marks will be a race committee boat and a buoy with a blue flag.

9 THE START

9.1 The starting line will be between staffs displaying orange flags on the starting marks.

9.2 Boats whose warning signal has not been made shall avoid the starting area.

10 COURSE CHANGES

To change the next leg of the course, the race committee will lay a new mark, move the finishing line, or move a leeward gate or mark. When a new mark is laid, the original mark will be removed as soon as practicable. When, in a subsequent change a new mark is replaced, it will be replaced by an original mark.

11 THE FINISH

The finishing line will be between staffs displaying blue flags on the finishing marks.

12 TIME LIMITS & TARGET TIMES

12.1 The time limit and target time in minutes is as follows:

<i>Time limit</i>	<i>Finish window</i>	<i>Target time</i>
90	30	45

Failure to meet the target time will not be grounds for redress. This changes rule 62.1(a).

12.2 Boats failing to finish within the finish window time after the first boat sails the course and finishes will be scored according to their observed position on the course, which may be the position at the last mark rounded. This changes rules 35, A4 and A5.

13 PROTESTS & REQUESTS FOR REDRESS

- 13.1 Protest forms are available at the race office. Protests and requests for redress or reopening shall be delivered there within the appropriate time limit.
- 13.2 The protest time limit is 90 minutes after the last boat has finished the last race of the day or the race committee signals no more racing today, whichever is later.
- 13.3 Notices will be posted no later than 30 minutes after the protest time limit to inform competitors of hearings in which they are parties or named as witnesses.
- 13.4 Notices of protests by the race committee or protest committee will be posted to inform boats under rule 61.1(b).
- 13.5 Breaches of instructions 9.2, 15, 16 and 18 will not be grounds for protest by a boat. This changes rule 60.1(a).
- 13.6 For infringements of rules other than those in RRS Part 2, the protest committee may award a penalty of less than disqualification.
- 13.7 On the last scheduled day of racing a request for reopening a hearing shall be delivered:
- (a) within the protest time limit if the requesting party was informed of the decision on the previous day;
 - (b) no later than 30 minutes after the requesting party was informed of the decision on that day.
- This changes rule 66.
- 13.8 On the last scheduled day of racing, a request for redress based on a protest committee decision shall be delivered no later than 30 minutes after the decision was posted. This changes rule 62.2.

14 SCORING

- 14.1 Three races are required to be completed to constitute a series.
- 14.2 (a) When fewer than four races have been completed, a boat's series score will be the total of her race scores.
- (b) When four or more races have been completed, a boat's series score will be the total of her race scores excluding her worst score.
- 14.3 A boat starting later than 4 minutes after her starting signal will be scored Did Not Start. This changes rules A4 and A5.
- 14.4 To request correction of an alleged error in posted race or series results, a boat may complete a scoring enquiry form available at the race office.

15 SAFETY REGULATIONS

- 15.1 Competitors shall wear personal flotation devices at all times while afloat, except briefly while adjusting clothing or personal equipment.
- 15.2 Check-out and check-in of competitors will apply as follows:
- (a) The tally control point to check-out and check-in competitors will be located at the race office.
 - (b) Tallies comprise numbered rubber wristbands. Numbers will be allocated at registration, and posted on the official notice board. Tallies shall be worn visibly by all competitors, over clothing, on the right wrist, at all times while afloat.
 - (c) Competitors shall check-out before racing by collecting their tallies.
 - (d) Competitors shall check-in immediately on returning to shore after racing, by returning the tallies to tally control.
- 15.3 A boat that retires from a race shall notify the race committee as soon as possible.
- 15.4 In accordance with NoR 12, Berthing, boats shall return to and remain in their assigned berths.
- 15.5 The race committee may protest a boat for a breach of these safety regulations. Alternatively it may apply a penalty of 3 points without a hearing for the breach. This changes rules 63.1 and A5.

16 REPLACEMENT OF CREW OR EQUIPMENT

- 16.1 Substitution of competitors will not be allowed without prior written approval of the race committee.
- 16.2 Substitution of damaged or lost equipment will not be allowed unless approved by the race committee. Requests for substitution shall be made to the committee at the first reasonable opportunity.
- 16.3 **Identification on Sails:** Under exceptional circumstances, the race committee may permit a boat to use sails carrying a sail number other than that required by RRS Appendix G. Such permission shall be requested at the first reasonable opportunity. This changes rule 77 and Appendix G.

17 EQUIPMENT & MEASUREMENT CHECKS

A boat or equipment may be inspected at any time for compliance with the class rules and sailing instructions. On the water, a boat can be instructed by a race committee equipment inspector or measurer to proceed immediately to a designated area for inspection.

18 IDENTIFICATION & EVENT ADVERTISING

Boats shall display bow numbers and event advertising when required. The organizing authority will supply the material and instructions for its use.

19 SUPPORT BOATS

Team leaders, coaches and other support personnel shall stay outside areas where boats are racing from the time of the preparatory signal for the first class to start until all boats have finished or retired or the race committee signals a postponement, general recall or abandonment.

20 RADIO COMMUNICATION

Except in an emergency, a boat shall neither make nor receive radio transmissions, text messages or cellular phone calls while racing.

21 PRIZES

The trophies and prizes to be awarded are detailed in the Notice of Race.

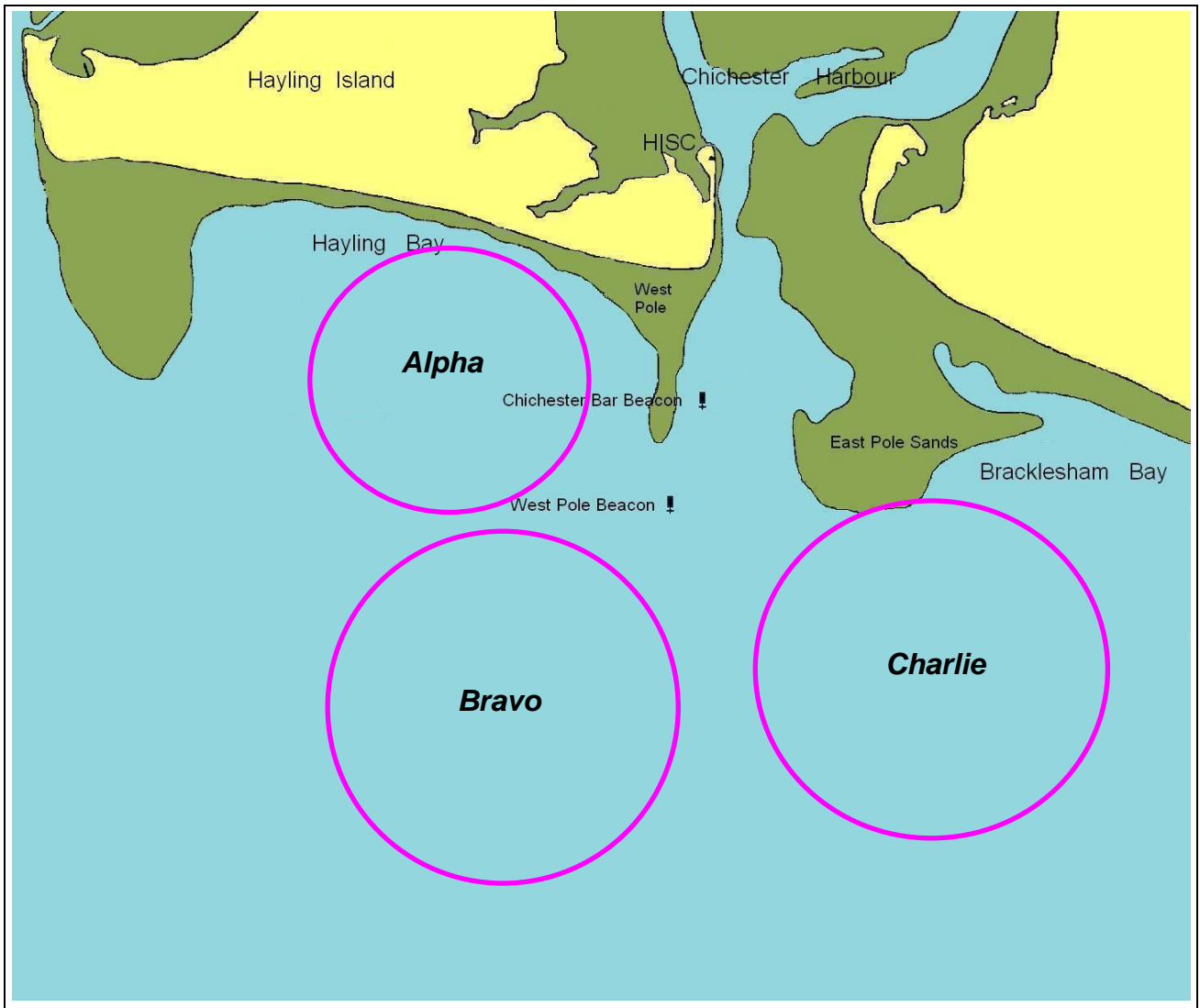
22 RISK STATEMENT

- 22.1 Rule 4 of the Racing Rules of Sailing states: "The responsibility for a boat's decision to participate in a race or to continue racing is hers alone."
- 22.2 Sailing is by its nature an unpredictable sport and therefore inherently involves an element of risk. By taking part in the event, each competitor agrees and acknowledges that:
- (a) They are aware of the inherent element of risk involved in the sport and accept responsibility for the exposure of themselves, their crew and their boat to such inherent risk whilst taking part in the event;
 - (b) They are responsible for the safety of themselves, their crew, their boat and their other property whether afloat or ashore;
 - (c) They accept responsibility for any injury, damage or loss to the extent caused by their own actions or omission;
 - (d) Their boat is in good order, equipped to sail in the event and they are fit to participate;
 - (e) The provision of a race management team, patrol boats and other officials and volunteers by the event organizer does not relieve them of their own responsibilities;
 - (f) The provision of patrol boat cover is limited to such assistance, particularly in extreme weather conditions, as can be practically provided in the circumstances.

23 INSURANCE

Each participating boat shall be insured with valid third-party liability insurance with a minimum cover of £2million per event or the equivalent.

**Attachment A
RACING AREAS**



Attachment B
COURSE DIAGRAMS

